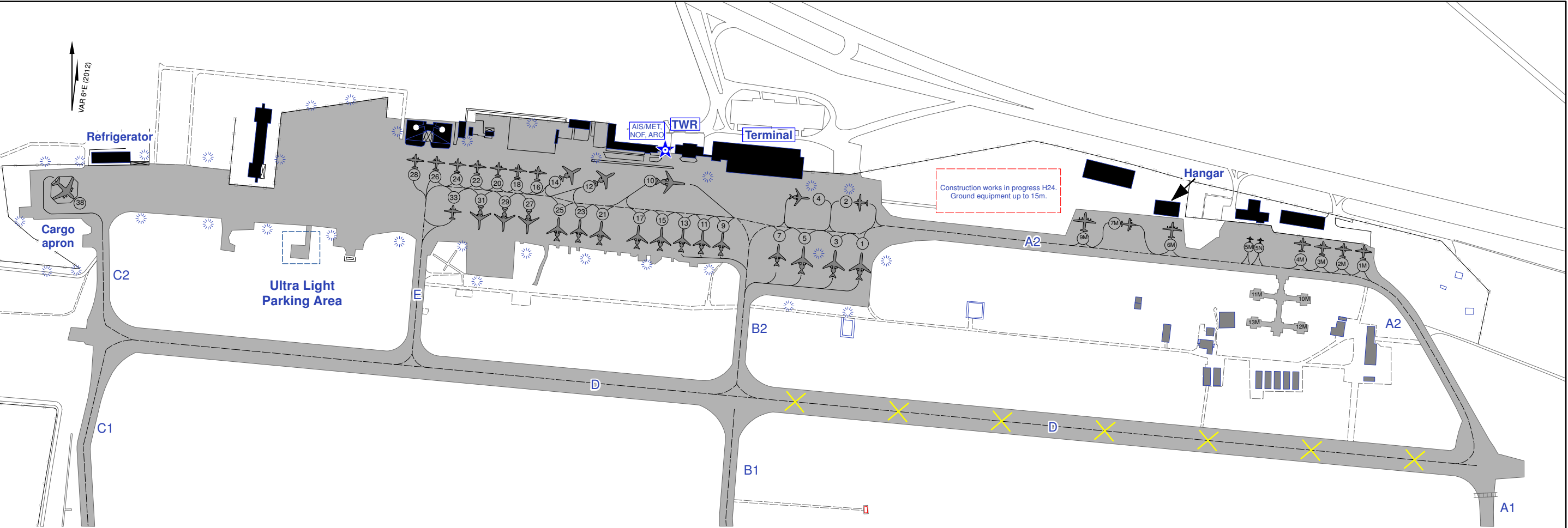


AERODROME AIRCRAFT PARKING AND
GROUND MOVEMENT CHART- ICAO

AD ELEVATION 399 FT

GROUND:121.800 MHz

CHISINAU / INTERNATIONAL



INS REFERENCE POINTS/ACL location and ELEV												PARKING POSITIONS			
PSN	NORTH	EAST	ELEV(FT)	PSN	NORTH	EAST	ELEV(FT)	PSN	NORTH	EAST	ELEV(FT)	Positions	Wingspan max.	Length max.	Remarks
1	46°56'01.23"N	028°56'14.28"E	312	18	46°56'06.55"N	028°55'46.92"E	325	1M	46°56'00.18"N	028°56'54.48"E	295	1, 3, 5, 10	38M	48M	-
2	46°56'04.01"N	028°56'13.74"E	310	20	46°56'06.69"N	028°55'45.35"E	326	2M	46°56'00.32"N	028°56'52.85"E	296	27, 29, 31	36M	45M	push back
3	46°56'01.40"N	028°56'12.17"E	314	21	46°56'03.31"N	028°55'53.47"E	318	3M	46°56'00.47"N	028°56'51.20"E	297	4	29M	33M	-
4	46°56'04.29"N	028°56'10.18"E	312	22	46°56'06.83"N	028°55'43.67"E	327	4M	46°56'00.68"N	028°56'49.58"E	298	7	29M	37M	-
5	46°56'01.64"N	028°56'09.65"E	315	23	46°56'03.44"N	028°55'51.75"E	320	5M	46°56'00.95"N	028°56'46.12"E	299	9, 11, 13, 23	29M	39M	push back
7	46°56'02.51"N	028°56'07.63"E	316	24	46°56'06.96"N	028°55'42.08"E	328	5N	46°56'01.03"N	028°56'45.44"E	299	12, 14	35M	37M	push back
9	46°56'02.51"N	028°56'03.17"E	316	25	46°56'03.58"N	028°55'50.03"E	321	6M	46°56'01.61"N	028°56'39.15"E	300	15, 17, 21, 25	35M	39M	push back
10	46°56'05.25"N	028°56'00.22"E	313	26	46°56'07.12"N	028°55'40.38"E	329	7M	46°56'02.37"N	028°56'36.35"E	300	16, 18, 20, 22, 24, 26, 28	29M	24M	push back
11	46°56'02.64"N	028°56'01.59"E	315	27	46°56'02.71"N	028°55'47.43"E	323	9M	46°56'02.16"N	028°56'32.80"E	301	38	38M	37M	-
12	46°56'05.95"N	028°55'54.60"E	317	28	46°56'07.26"N	028°55'38.70"E	330	10M	46°55'58.06"N	028°56'49.54"E	298	1M, 2M, 3M, 4M	28M	24M	push back
13	46°56'02.77"N	028°56'00.01"E	315	29	46°56'02.87"N	028°55'45.51"E	324	11M	46°55'58.34"N	028°56'46.06"E	298	5M, 5N	11M	9M	-
14	46°56'06.25"N	028°55'51.88"E	319	31	46°56'03.01"N	028°55'43.58"E	325	12M	46°55'56.53"N	028°56'49.24"E	297	6M	32M	28M	push back
15	46°56'02.90"N	028°55'58.30"E	316	33	46°56'04.41"N	028°55'41.59"E	328	13M	46°55'56.80"N	028°56'45.74"E	298	7M	22M	26M	-
16	46°56'06.41"N	028°55'48.50"E	323	38	46°56'05.29"N	028°55'12.32"E	364					9M	37M	36M	push back
17	46°56'03.05"N	028°55'56.44"E	317									10M, 11M, 12M, 13M	29M	24M	push back
												2, 33	29M	24M	-

WARNINGS:

1. Ground Taxi Operations Between Parking Positions No. 9 and No. 33 for ACFT with Wing Span more than 30 meters are Permitted by Towing or accompanied by "FOLLOW ME" car.
2. Taxiing-in Operations to Parking Positions No. 12 and No. 14 are Permitted from the West only.
3. The Longitudinal Slope of the TWY D at the section from TWY E to TWY C1 reaches 2,9%.
4. TWY A2 is serviceable for ACFT with wingspan apt Code Letter B (15m up to but not including 24m) and less.
5. Part of Taxiway 'D' Between Taxiways 'A2' and 'B2' Closed for Taxiing.
6. The Longitudinal Slope of Parking Positions № 1 –1.1%, № 3 –1.8%, № 5 –1.4%, № 9 –1,1%, № 11 –1,1%, № 12 –1.42%, № 14 –1.16%.
7. The Cross Slope of Parking Positions № 1 –1.1%, № 5 –1,25%.
8. GND Taxi OPS from / to ACFT stands No. 9, 11, 13 for ACFT with wing span up to 25M are allowed only by OPS department clearance (call sign Apron – 131.7 MHz).

SCALE
1:7 000



Changes: Parking 27, 29, 31, 33 changes, 35 deleted.

PAGE INTENTIONALLY LEFT BLANK